

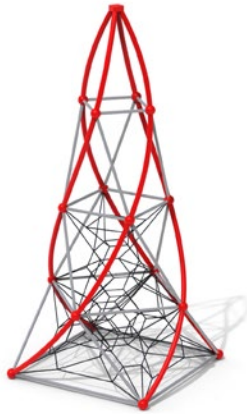
# NEW DESIGN Twist Tower



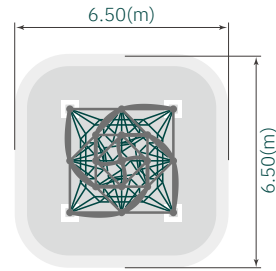
**New Design**

Playground Net manufacturer RX Compound wire Rope  
Customized Design for playground Equipment





### Use Zone View



**Product Number** RC-1601-1

**Age** 6~12

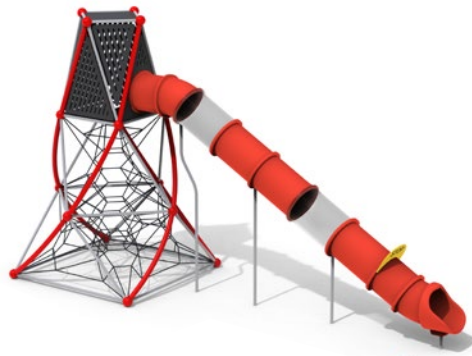
**Capacity** 20

**Product Size** (m) 3.29 X 3.29  
('-") 10' 10" X 10' 10"

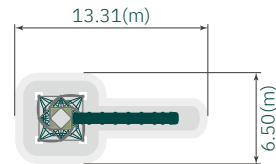
**Overall Height** (m) 7.36 / ('-) 24' 2"

**Fall Height** (m) 1.63 / ('-) 5' 4"

**Use Zone** (m) 6.50 X 6.50  
('-") 21' 4" X 21' 4"



### Use Zone View



**Product Number** RC-1601-2

**Age** 6~12

**Capacity** 25

**Product Size** (m) 9.70 X 3.29  
('-") 31' 10" X 10' 10"

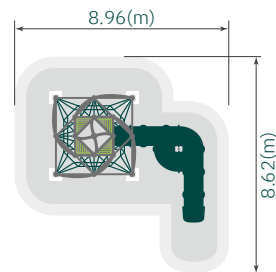
**Overall Height** (m) 5.52 / ('-) 18' 1"

**Fall Height** (m) 1.63 / ('-) 5' 4"

**Use Zone** (m) 13.31 X 6.50  
('-") 43' 8" X 21' 4"



### Use Zone View



**Product Number** RC-1601-3

**Age** 6~12

**Capacity** 25

**Product Size** (m) 5.96 X 5.08  
('-") 19' 8" X 16' 8"

**Overall Height** (m) 7.36 / ('-) 24' 2"

**Fall Height** (m) 1.63 / ('-) 5' 4"

**Use Zone** (m) 8.96 X 8.62  
('-") 29' 5" X 28' 4"

New Design

# Twist Tower

1601~1603-series

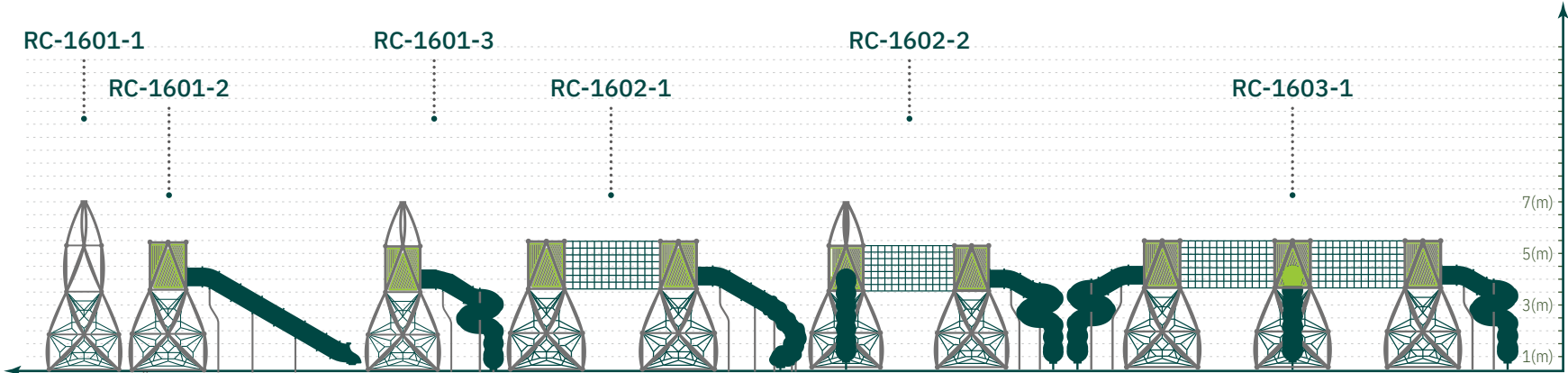
5



To more see 'SCAN'  
RC-1601-1

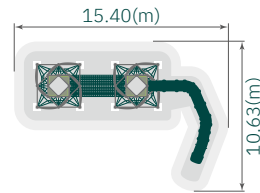


High Level





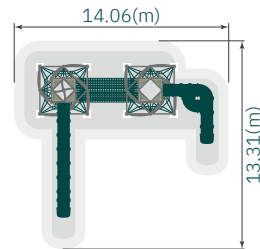
Use Zone View



<b>Product Number</b>	<b>RC-1602-1</b>
<b>Age</b>	6~12
<b>Capacity</b>	55
<b>Product Size</b>	(m) 12.48 X 7.14 ('-") 41' X 23' 5"
<b>Overall Height</b>	(m) 5.52 / ('-) 18' 1"
<b>Fall Height</b>	(m) 1.63 / ('-) 5' 4"
<b>Use Zone</b>	(m) 15.40 X 10.63 ('-") 50' 7" X 34' 11"



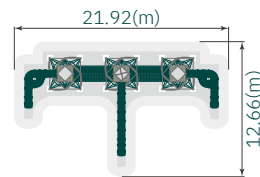
Use Zone View



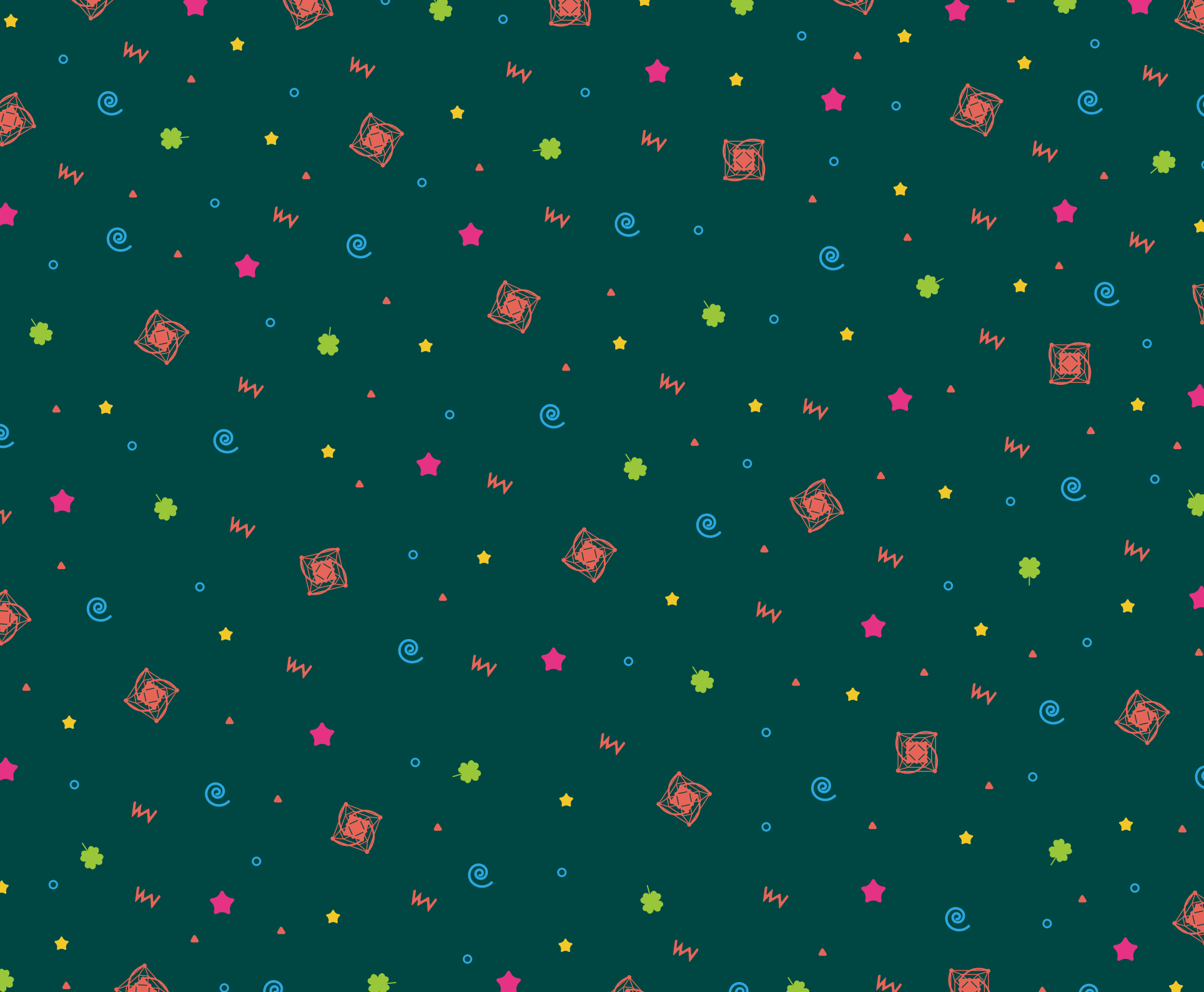
<b>Product Number</b>	<b>RC-1602-2</b>
<b>Age</b>	6~12
<b>Capacity</b>	55
<b>Product Size</b>	(m) 11.16 X 9.66 ('-") 36' 8" X 23' 5"
<b>Overall Height</b>	(m) 7.36 / ('-) 24' 1"
<b>Fall Height</b>	(m) 1.63 / ('-) 5' 4"
<b>Use Zone</b>	(m) 14.06 X 13.31 ('-") 46' 2" X 43' 8"



Use Zone View



<b>Product Number</b>	<b>RC-1603-1</b>
<b>Age</b>	6~12
<b>Capacity</b>	85
<b>Product Size</b>	(m) 19.02 X 9.70 ('-") 62' 6" X 31' 10"
<b>Overall Height</b>	(m) 5.52 / ('-) 18' 1"
<b>Fall Height</b>	(m) 1.63 / ('-) 5' 4"
<b>Use Zone</b>	(m) 21.92 X 12.66 ('-") 72' X 41' 7"



**Ropercamp always consider safe and fun  
for our children**



**Product Certification**

ASTM F1487 and CSA Z614

TUV safety certification

ISO 9001/ ISO 14001

**Contact us**

Tel : +82 51-727-5616

Fax : +82 51-727-5617

E-mail : sales@ropercamp.com

To more see'SCAN'  
**NEW DESIGN**

